



realities:united

Selected Works 2001-2022

Version 05.2018

www.realU.de



realities:united
reinraus, 2001
Instant Balkony Design (Prototype)
Dimensions 120cm x 150cm x 250cm
Photo ©realities:united
Video: <https://vimeo.com/70540166>





realities:united

BIX, Communicative Display Skin for the Kunsthhaus Graz, 2003

Permanent installation with 930 computer controlled circular fluorescent light tubes

Dimensions ~1000m²

Foto ©Paul Ott | Building ©Peter Cook & Colin Fournier | Artistic Content Displayed ©realities:united

Video: <https://vimeo.com/70466278>



realities:united

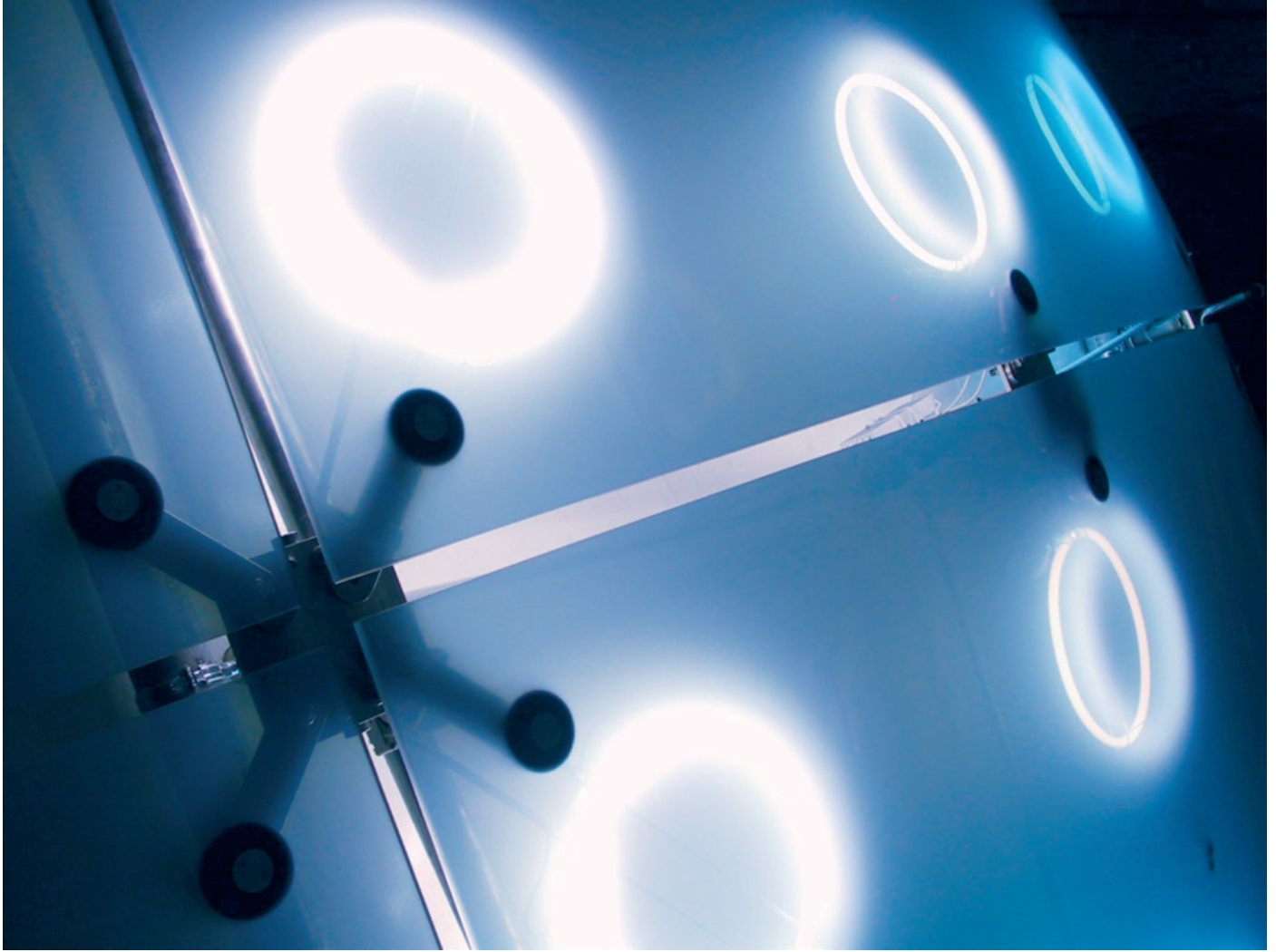
BIX, Communicative Display Skin for the Kunsthhaus Graz, 2003

Permanent installation with 930 computer controlled circular fluorescent light tubes

Dimensions ~1000m²

Foto ©Paul Ott | Building ©Peter Cook & Colin Fournier | Artistic Content Displayed ©realities:united

Video: <https://vimeo.com/70466278>



realities:united

BIX, Communicative Display Skin for the Kunsthaus Graz, 2003

Permanent installation with 930 computer controlled circular fluorescent light tubes

Dimensions ~1000m²

Foto ©Morley von Sternberg | Building ©Peter Cook & Colin Fournier | Artistic Content Displayed ©realities:united

Video: <https://vimeo.com/70466278>



realities:united

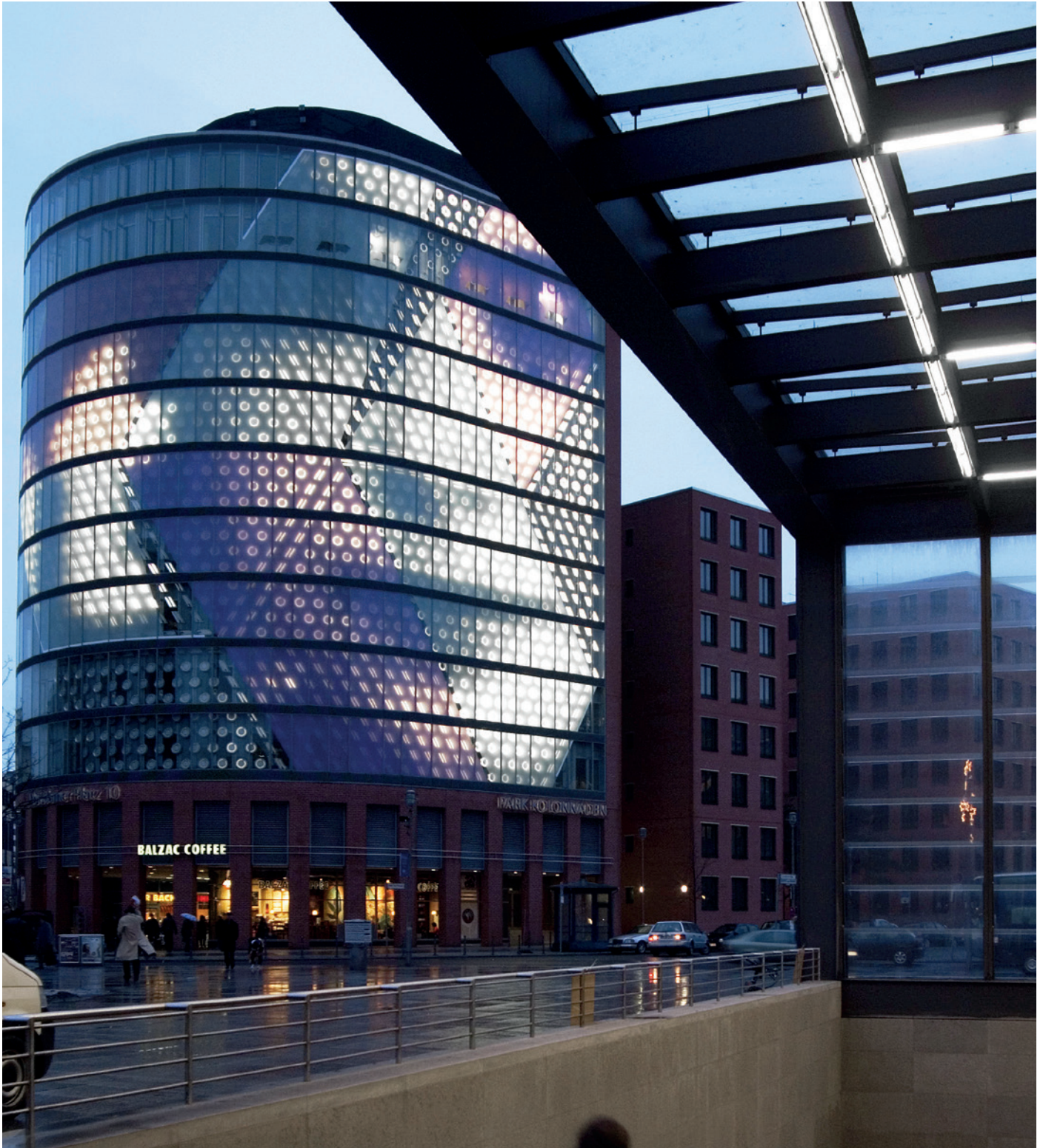
SPOTS, Light- and Media Installation at Potsdamer Platz in Berlin, 2005

Temporary installation with 1774 computer controlled linear and circular fluorescent light tubes

Dimensions ~1350m²

Foto ©Bernd Hiepe | Artistic Content Displayed ©Carsten Nikolai

Video: <https://vimeo.com/71500987>



realities:united

SPOTS, Light- and Media Installation at Potsdamer Platz in Berlin, 2005

Temporary installation with 1774 computer controlled linear and circular fluorescent light tubes

Dimensions ~1350m²

Foto ©Bernd Hiepe | Artistic Content Displayed ©Nina Fischer & Moruan El Sani

Video: <https://vimeo.com/71500987>



realities:united

SPOTS, Light- and Media Installation at Potsdamer Platz in Berlin, 2005

Temporary installation with 1774 computer controlled linear and circular fluorescent light tubes

Dimensions ~1350m²

Foto ©Bernd Hiepe | Artistic Content Displayed ©realities:united with John Dekron

Video: <https://vimeo.com/71500987>



realities:united

Powerplant, 2005

Kinetic light sculptures as a catalyst and symbol of the transformation of a post-industrial urban development area, Pasadena, California, USA

Dimensions: approx. 2 square miles

Rendering ©2005 realities:united | Project in collaboration with Nik Hafermaas



realities:united

Powerplant, 2005 (prototype, realization on hold)

Kinetic light sculptures as a catalyst and symbol of the transformation of a post-industrial urban development area, Pasadena, California, USA

Dimensions: 17m height

Photo ©2005 realities:united | Project in collaboration with Nik Hafermaas



realities:united

Powerplant, 2005 (prototype, realization on hold)

Kinetic light sculptures as a catalyst and symbol of the transformation of a post-industrial urban development area, Pasadena, California, USA

Dimensions: 17m height

Photo ©2005 realities:united | Project in collaboration with Nik Hafermaas



realities:united

Powerplant, 2005 (prototype, realization on hold)

Kinetic light sculptures as a catalyst and symbol of the transformation of a post-industrial urban development area, Pasadena, California, USA

Dimensions: 17m height

Photo ©2005 realities:united | Project in collaboration with Nik Hafermaas



realities:united

MuseumX, 2006

Imaginary Museum for the Museum Abteiberg Mönchengladbach, Germany

Dimensions ~65.000m³

Foto ©Natalie Czech

Video: <https://vimeo.com/70553840>



realities:united

MuseumX, 2006

Imaginary Museum for the Museum Abteiberg Mönchengladbach, Germany

Production, Installation Process, Political Opening

Dimensions ~65.000m³

Foto Collage ©realities:united

Video: <https://vimeo.com/70553840>



realities:united

MuseumX, 2006

Imaginary Museum for the Museum Abteiberg Mönchengladbach, Germany

Dimensions ~65.000m³

Foto ©Natalie Czech

Video: <https://vimeo.com/70553840>



realities:united

MuseumX, 2006

Imaginary Museum for the Museum Abteiberg Mönchengladbach, Germany

Dimensions ~65.000m³

Foto ©Natalie Czech

Video: <https://vimeo.com/70553840>



realities:united

MuseumComplex, 2007

After Image of MuseumX in the changing exhibition space of Museum Abteiberg Mönchengladbach, Germany

Installation with original elements of the imaginary MuseumX

14 out of 64 Façade elements, 473cm x 214cm each; 2 Video Projections: 1. Robert Morris, „Site“, 1964, 2. Maija Timonen with MOCA MAAS, „Was dort war, ist nicht hier, eben“, 2007

Foto ©Natalie Czech

Video: <https://vimeo.com/70553840>



realities:united

AAmp, 2007

Generative Video Façade Installation for the Wilkie Edge, Singapore

Dimensions ~800m²

Software testing on site

Foto ©Tim Griffith | Building ©WOHA



realities:united

AAmp, 2007

Generative Video Façade Installation for the Wilkie Edge, Singapore

Dimensions ~800m²

Software testing on site

Foto ©realities:united | Building ©WOHA



realities:united

AAmp, 2007

Generative Video Façade Installation for the Wilkie Edge, Singapore

Dimensions ~800m²

Software testing on site

Foto ©realities:united | Building ©WOHA



realities:united

Contemporary Architecture, 2007

Installation, 14 computer controlled luminaires (2 seven-segment displays)

Dimensions 4664mm x 3491mm

Foto ©2007 Artistsspace, New York

Video: <https://vimeo.com/70537967>



realities:united

Contemporary Architecture, 2007 (photo at Bauhaus Archive, Berlin, 2009)

Installation, 14 computer controlled luminaires (2 seven-segment displays)

Dimensions 4664mm x 3491mm

Foto ©2009 realities:united, Berlin

Video: <https://vimeo.com/70537967>



realities:united

Contemporary Architecture, 2007 (photo at DMY, Berlin, 2009)

Installation, 14 computer controlled luminaires (2 seven-segment displays)

Dimensions 4664mm x 3491mm

Foto ©2009 realities:united, Berlin

Video: <https://vimeo.com/70537967>



realities:united

Crystal Mesh, 2010

Façade installation for the Iluma Urban Entertainment Centre, Singapore

Dimensions ~3.500m²

Installation on Site 03/09

Foto ©Tim Griffith | Building ©WOHA

Video: <https://vimeo.com/3473657>



realities:united

Crystal Mesh, 2010

Façade installation for the Iluma Urban Entertainment Centre, Singapore

Dimensions ~3.500m2

Installation on Site 10/08

Foto ©realities:united | Building ©WOHA

Video: <https://vimeo.com/3473657>



realities:united

Crystal Mesh, 2010

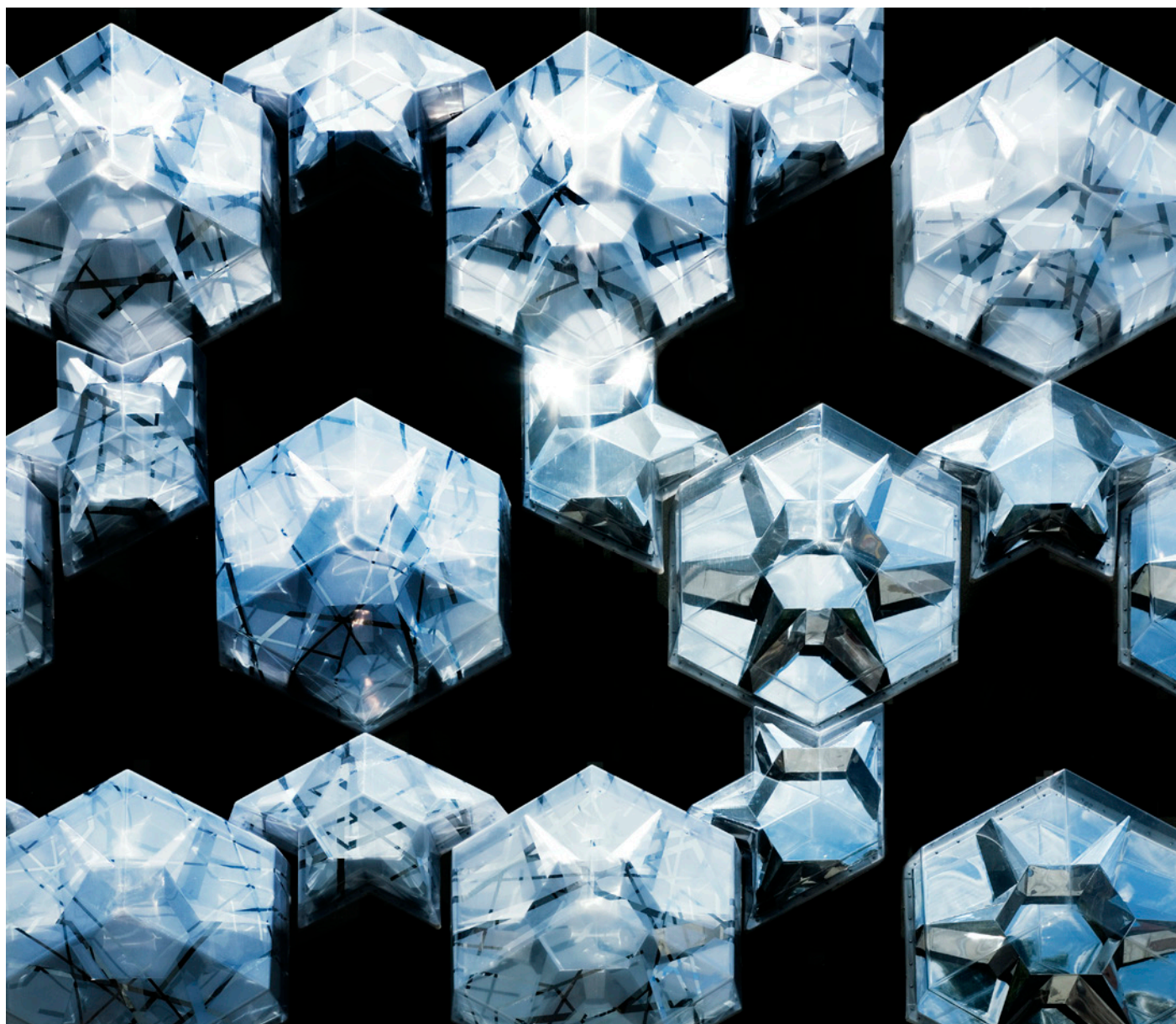
Façade installation for the Iluma Urban Entertainment Centre, Singapore

Dimensions ~3.500m²

Testing 10/09

Foto ©realities:united | Building ©WOHA

Video: <https://vimeo.com/3473657>



realities:united

Crystal Mesh, 2010

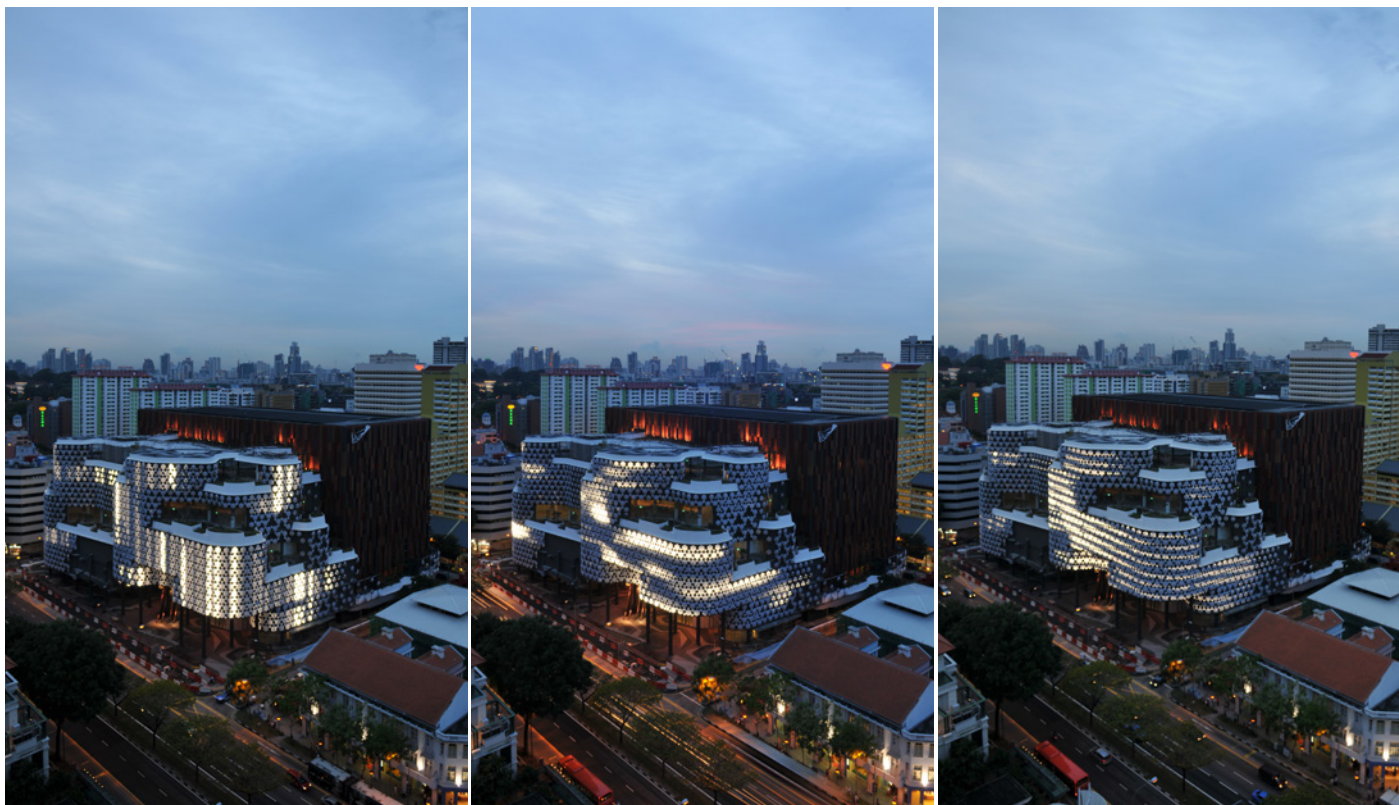
Façade installation for the Iluma Urban Entertainment Centre, Singapore

Dimensions ~3.500m²

Installation on Site 03/09

Foto ©realities:united | Building ©WOHA

Video: <https://vimeo.com/3473657>



realities:united

Crystal Mesh, 2010

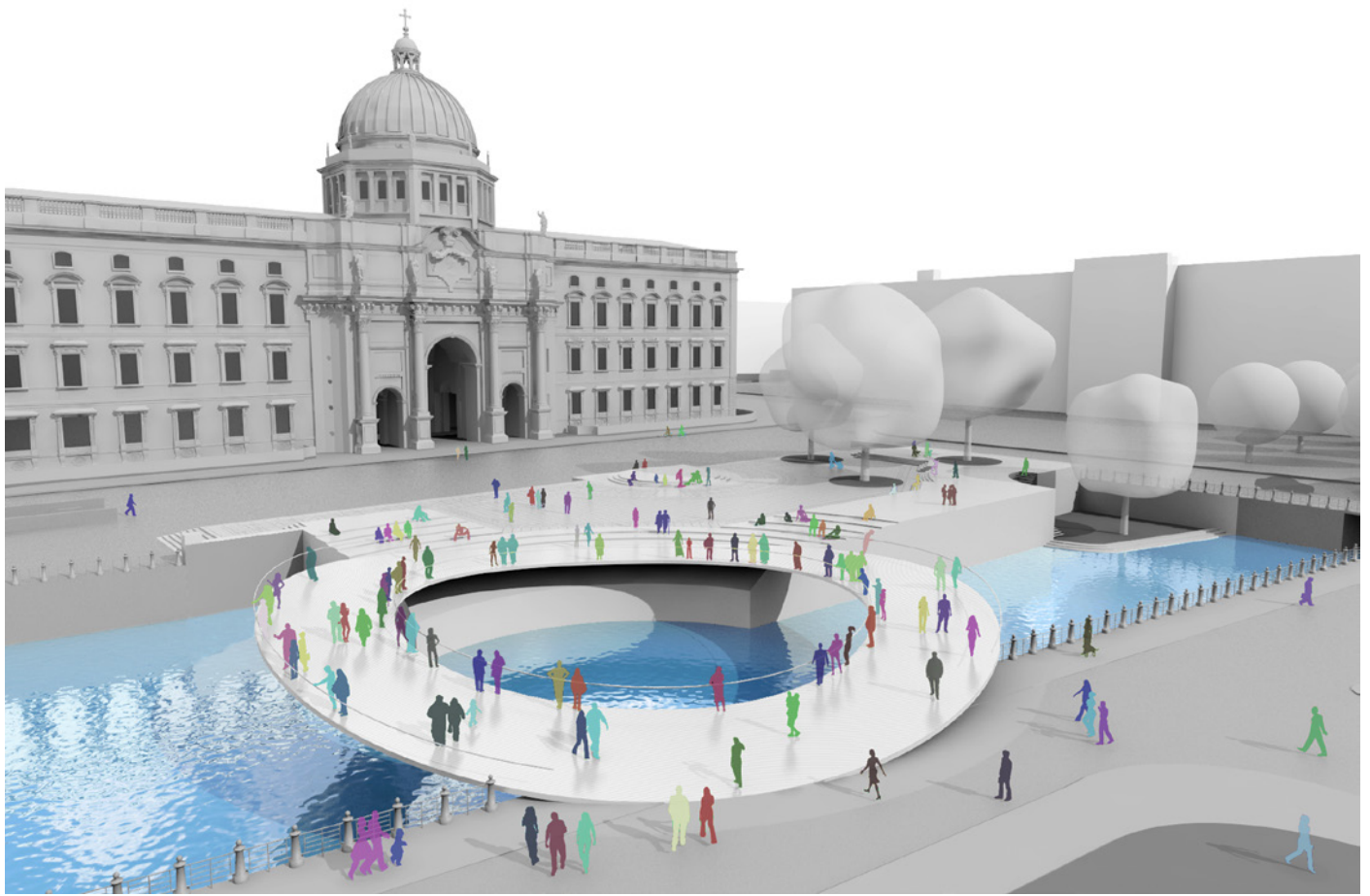
Façade installation for the Iluma Urban Entertainment Centre, Singapore

Dimensions ~3.500m²

Testing 10/09

Foto ©realities:united | Building ©WOHA

Video: <https://vimeo.com/3473657>



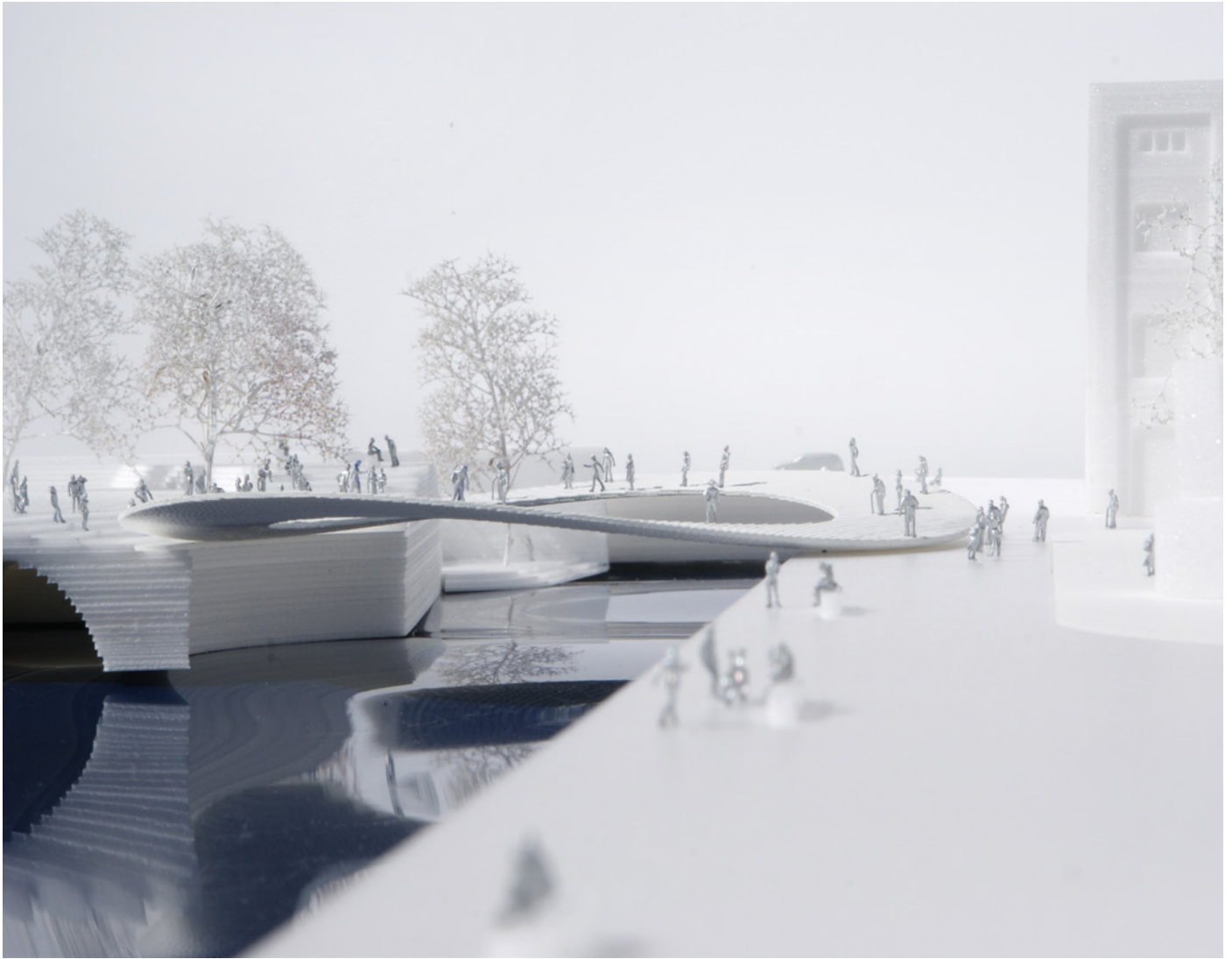
realities:united

Freiheits- und Einheitsdenkmal, 2010 (awarded competition entry)

Proposal for a circular bridge as an „infrastructural“ monument at Schlossplatz in Berlin, Germany

Diameter: 32m

Rendering ©2010 realities:united | Project in collaboration with BIG Architects



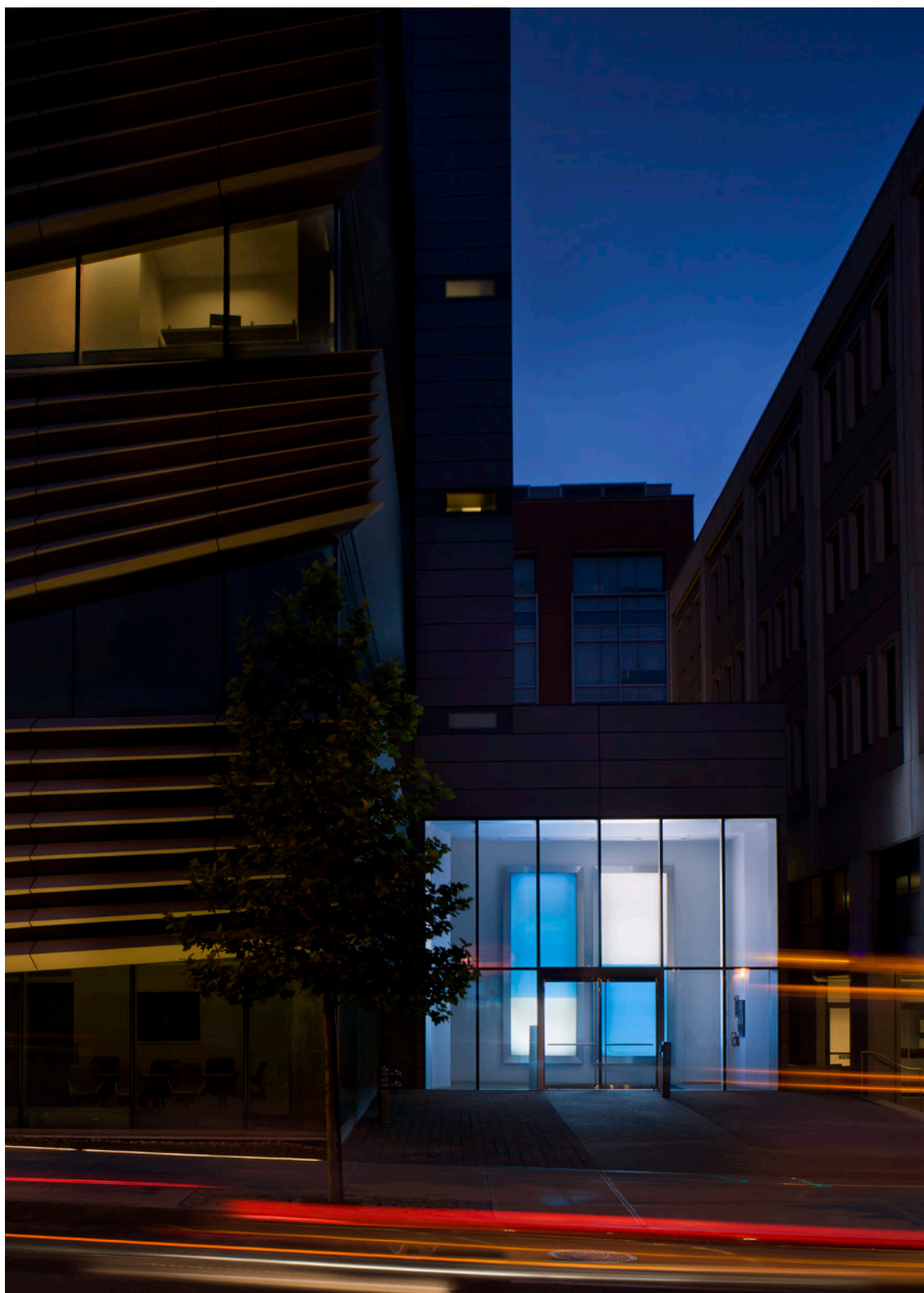
realities:united

Freiheits- und Einheitsdenkmal, 2010 (awarded competition entry)

Proposal for a circular bridge as an „infrastructural“ monument at Schlossplatz in Berlin, Germany

Diameter: 32m

Model Foto ©2010 BIG | Project in collaboration with BIG Architects



realities:united

2x5 (Brothers), 2012

Permanent kinetic building-site art installation for the Perry & Marty Granoff Center for the Creative Arts, Providence, RI, USA

2 mechanical "poster scrollers" in a special format, each 180 cm wide and 440 cm tall

Foto ©2012 Warren Jagger, Providence, USA

Video: <https://vimeo.com/70483705>



realities:united

2x5 (Brothers), 2012

Permanent kinetic building-site art installation for the Perry & Marty Granoff Center for the Creative Arts, Providence, RI, USA

2 mechanical "poster scrollers" in a special format, each 180 cm wide and 440 cm tall

Foto ©2012 Warren Jagger, Providence, USA

Video: <https://vimeo.com/70483705>



realities:united

2x5 (Brothers), 2012

Permanent kinetic building-site art installation for the Perry & Marty Granoff Center for the Creative Arts, Providence, RI, USA

2 mechanical "poster scrollers" in a special format, each 180 cm wide and 440 cm tall

Foto ©2012 Warren Jagger, Providence, USA

Video: <https://vimeo.com/70483705>



realities:united

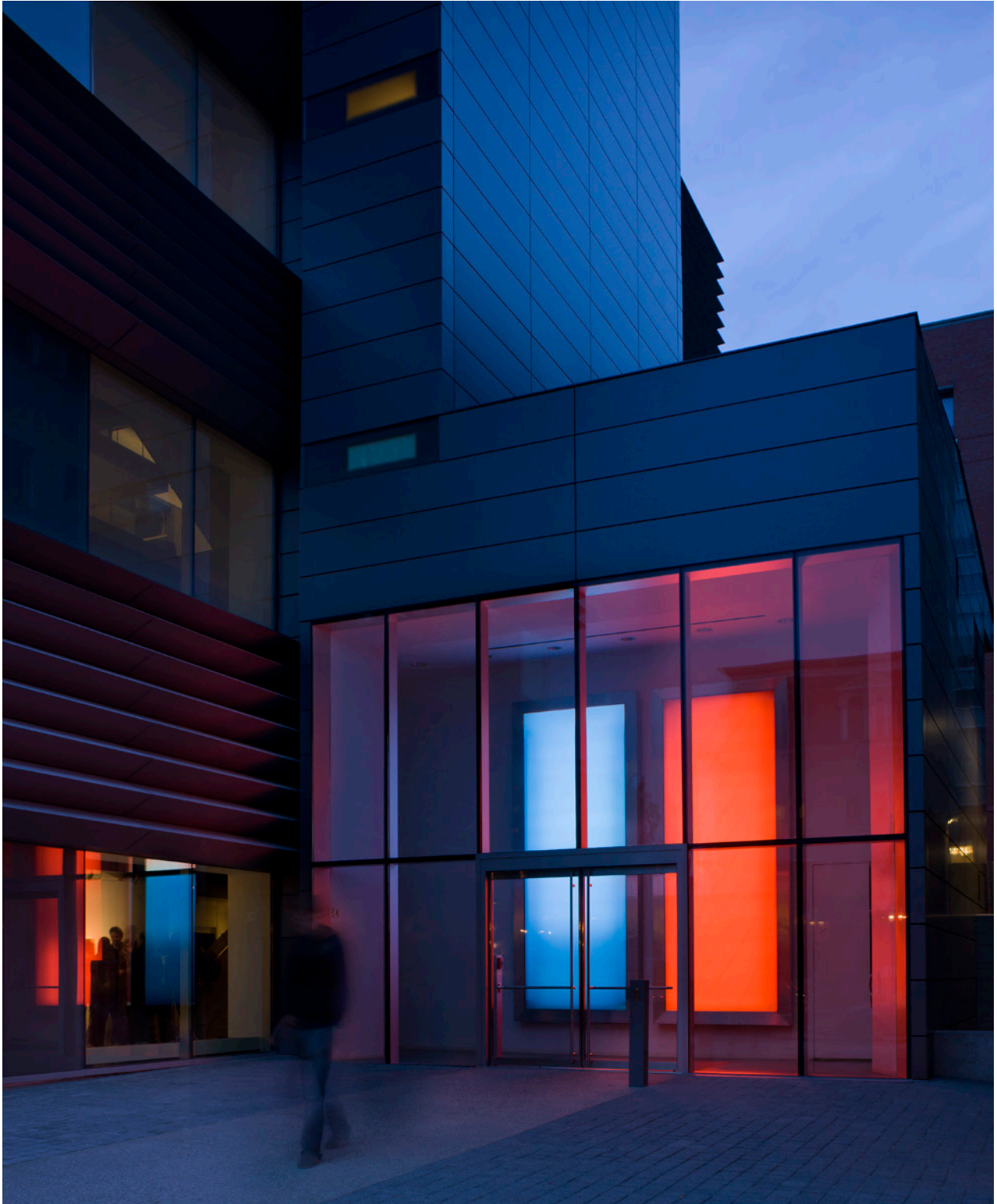
2x5 (Brothers), 2012

Permanent kinetic building-site art installation for the Perry & Marty Granoff Center for the Creative Arts, Providence, RI, USA

2 mechanical "poster scrollers" in a special format, each 180 cm wide and 440 cm tall

Foto ©2012 Warren Jagger, Providence, USA

Video: <https://vimeo.com/70483705>



realities:united

2x5 (Brothers), 2012

Permanent kinetic building-site art installation for the Perry & Marty Granoff Center for the Creative Arts, Providence, RI, USA

2 mechanical "poster scrollers" in a special format, each 180 cm wide and 440 cm tall

Foto ©2012 Warren Jagger, Providence, USA

Video: <https://vimeo.com/70483705>



realities:united

TransReflex, 2012

Permanent kinetic Façade installation for the art museum „Kloster unser Lieben Frauen“ in Magdeburg, Germany

17 movable panels mirror elements, each 150 cm wide and 300 cm tall

Foto ©2012 realities:united

Video: <https://vimeo.com/71013797>



realities:united

TransReflex, 2012

Permanent kinetic Façade installation for the art museum „Kloster unser Lieben Frauen“ in Magdeburg, Germany

17 movable panels mirror elements, each 150 cm wide and 300 cm tall

Foto ©2012 realities:united

Video: <https://vimeo.com/71013797>



realities:united

TransReflex, 2012

Permanent kinetic Façade installation for the art museum „Kloster unser Lieben Frauen“ in Magdeburg, Germany

17 movable panels mirror elements, each 150 cm wide and 300 cm tall

Foto ©2012 realities:united

Video: <https://vimeo.com/71013797>



realities:united

Sender, 2013

Temporary installation & performance for Urban Lights Ruhr Festival

Photo ©2013 Phillip Kaminiak

Video: <https://vimeo.com/108553735>



realities:united

Sender, 2013

Temporary installation & performance for Urban Lights Ruhr Festival

Photo ©2013 Phillip Kaminiak

Video: <https://vimeo.com/108553735>



realities:united

Sender, 2013

Temporary installation & performance for Urban Lights Ruhr Festival

Photo ©2013 Phillip Kaminiak

Video: <https://vimeo.com/108553735>



realities:united

Toni Areal, 2014

Public art installation & lighting system for the ZHdK (Zurich University of the Arts)

Dimensions: 7.900 m²

Photo ©2014 Roger Frei



realities:united

Toni Areal, 2014

Public art installation & lighting system for the ZHdK (Zurich University of the Arts)

Dimensions: 7.900 m²

Photo ©2014 Roger Frei



realities:united

Toni Areal

Public art installation & lighting system for the ZHdK (Zurich University of the Arts)

Dimensions: 7.900 m2

Photo ©2014 Roger Frei



realities:united

Toni Areal

Public art installation & lighting system for the ZHdK (Zurich University of the Arts)

Dimensions: 7.900 m²

Photo ©2014 Roger Frei



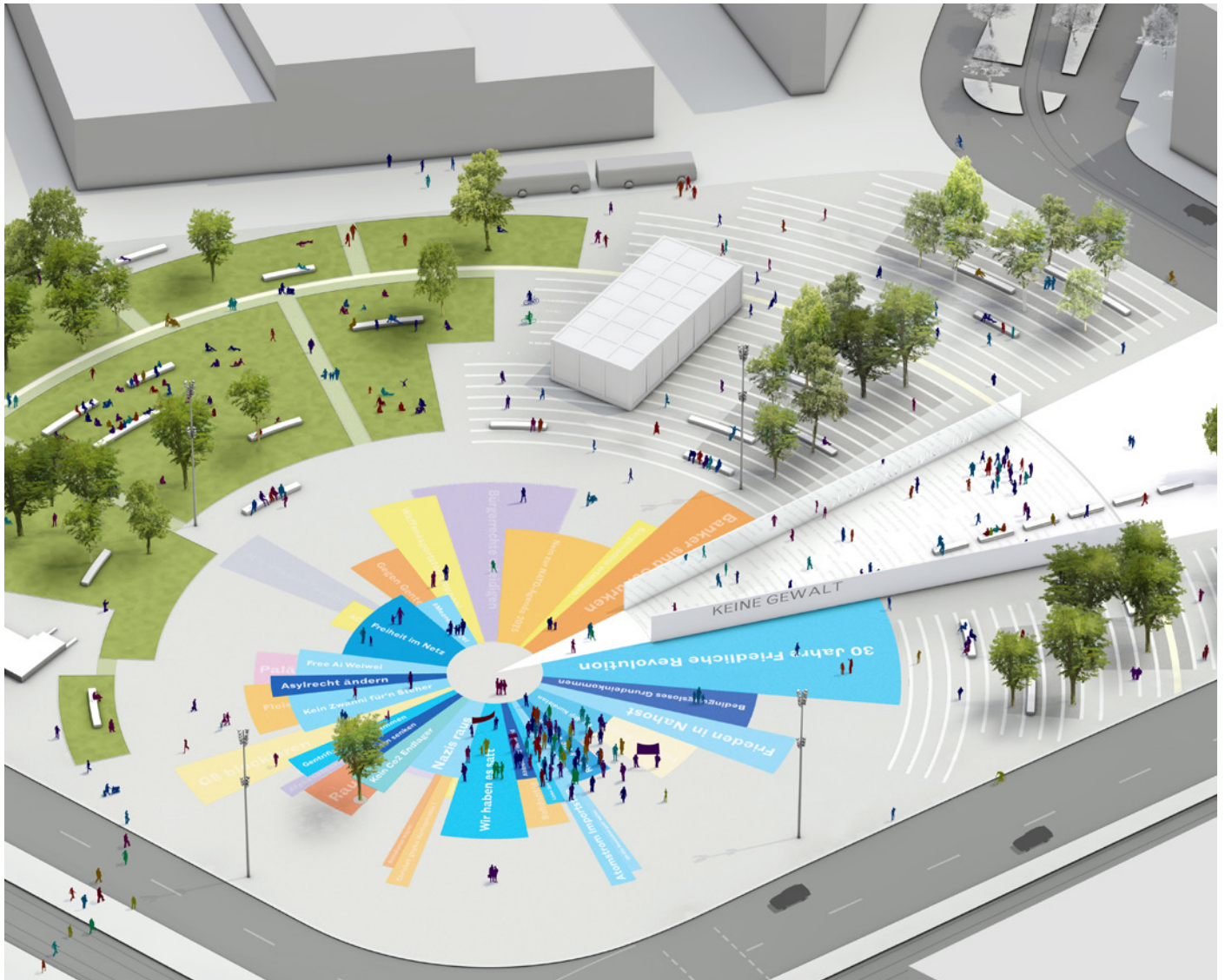
realities:united

Phantásien, 2015

Study room for the Mill Woods Library, Edmonton, Canada

Dimensions: ~4 x 2,5 m (WxH/Mirror)

Photo ©2015 Dwayne Martineau



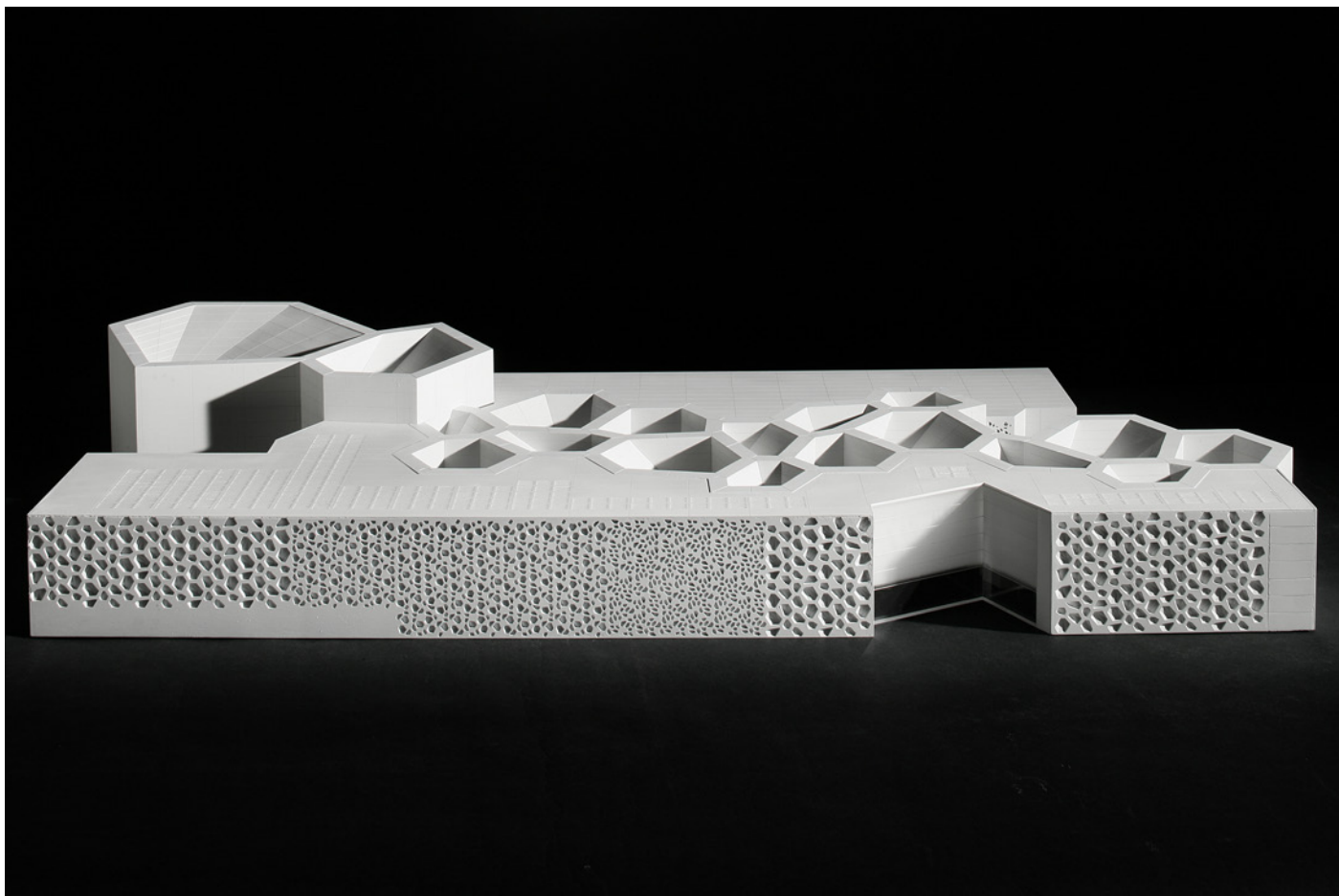
realities:united

Foundation for the Future, 2013

International competition, second place

Dimensions: ~16.500 m²

Rendering ©2013 realities:united



realities:united

C3A, 2016

Façade Integrated Media Installation for the Centro de Creación Artística Contemporánea de Andalucía, Spain

Façade Prototype (Glasfibre Reinforced Concrete, LED Light Units)

Dimensions ~1250m²

Foto 2011©Nieto Sobejano | Building ©Nieto Sobejano

Video: <https://vimeo.com/70487195>



realities:united

C3A, 2016

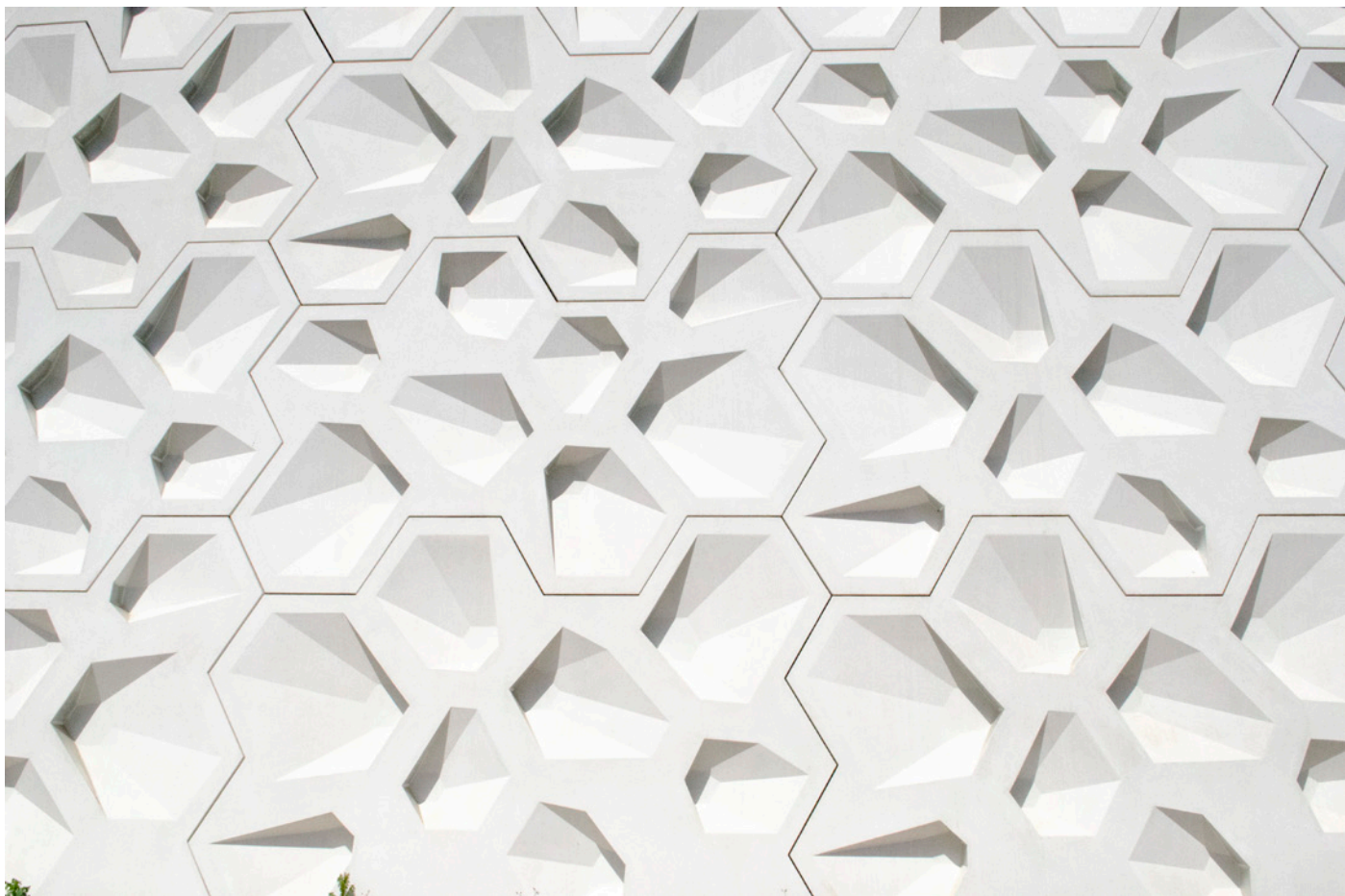
Façade Integrated Media Installation for the Centro de Creación Artística Contemporánea de Andalucía, Spain

Façade Prototype (Glasfibre Reinforced Concrete, LED Light Units)

Dimensions ~1250m²

Foto 2011©Nieto Sobejano | Building ©Nieto Sobejano

Video: <https://vimeo.com/70487195>



realities:united

C3A, 2016

Façade Integrated Media Installation for the Centro de Creación Artística Contemporánea de Andalucía, Spain

Façade Prototype (Glasfibre Reinforced Concrete, LED Light Units)

Dimensions ~1250m²

Foto 2011©Nieto Sobejano | Building ©Nieto Sobejano

Video: <https://vimeo.com/70487195>



realities:united

C3A, 2016

Façade Integrated Media Installation for the Centro de Creación Artística Contemporánea de Andalucía, Spain

Façade Prototype (Glasfibre Reinforced Concrete, LED Light Units)

Dimensions ~1250m²

Foto 2011©Nieto Sobejano | Building ©Nieto Sobejano

Video: <https://vimeo.com/70487195>



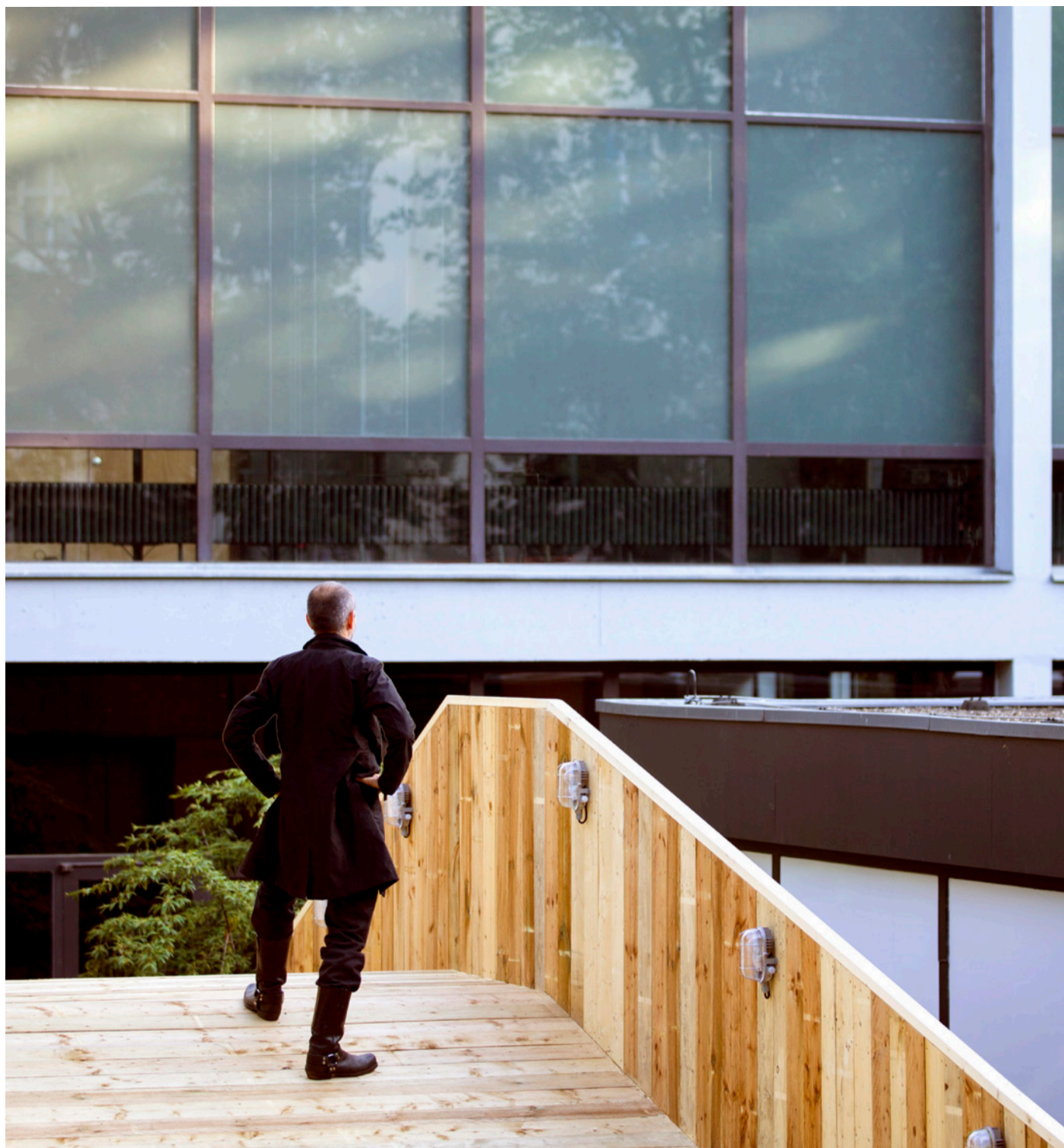
realities:united

Anhöhe, 2016

Temporary installation for the FOREIGN AFFAIRS theater festival at „Haus der Berliner Festspiele“

Dimensions: 20m x 8m x 3m

Fotos ©2016 realities:united



realities:united

Anhöhe, 2016

Temporary installation for the FOREIGN AFFAIRS theater festival at „Haus der Berliner Festspiele“

Dimensions: 20m x 8m x 3m

Fotos ©2016 realities:united



realities:united
Essential Tree 2, 2017
Public Art, Edmonton, Canada
Dimensions: ~14m Height
Foto ©2017 realities:united



realities:united

LightSpell, 2017

Interactive public art installation and illumination system for Steeles West subway station in Toronto, Canada (Spadina Line Extension Project)

Dimensions: 125m length x 3m width

Commission by Toronto Transit Cooperation (TTC)

Photo ©2017 realities:united



realities:united

LightSpell, 2017

Interactive public art installation and illumination system for Steeles West subway station in Toronto, Canada (Spadina Line Extension Project)

Dimensions: 125m length x 3m width

Commission by Toronto Transit Cooperation (TTC)

Photo ©2017 realities:united



realities:united

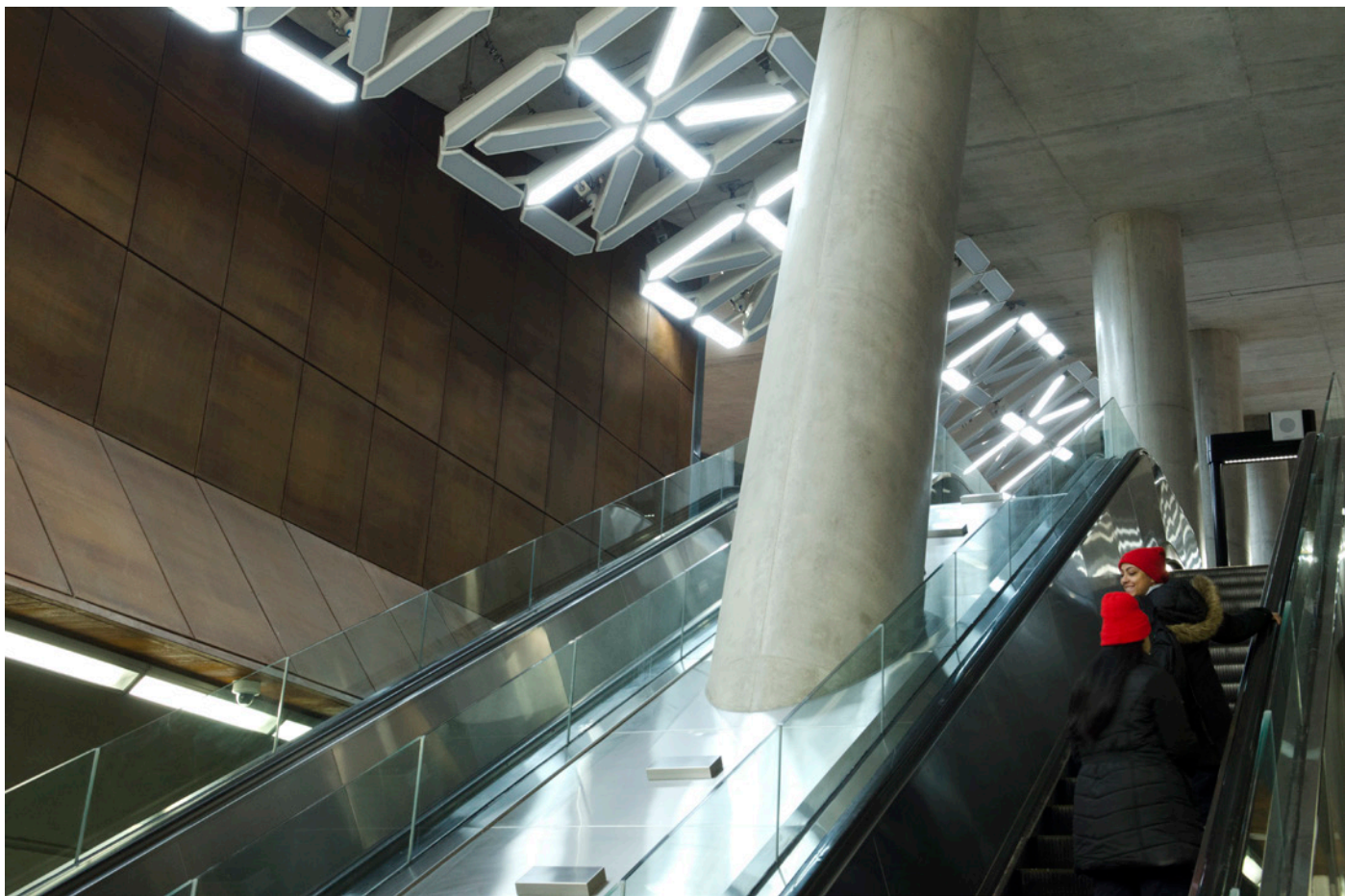
LightSpell, 2017

Interactive public art installation and illumination system for Steeles West subway station in Toronto, Canada (Spadina Line Extension Project)

Dimensions: 125m length x 3m width

Commission by Toronto Transit Cooperation (TTC)

Photo ©2017 realities:united



realities:united

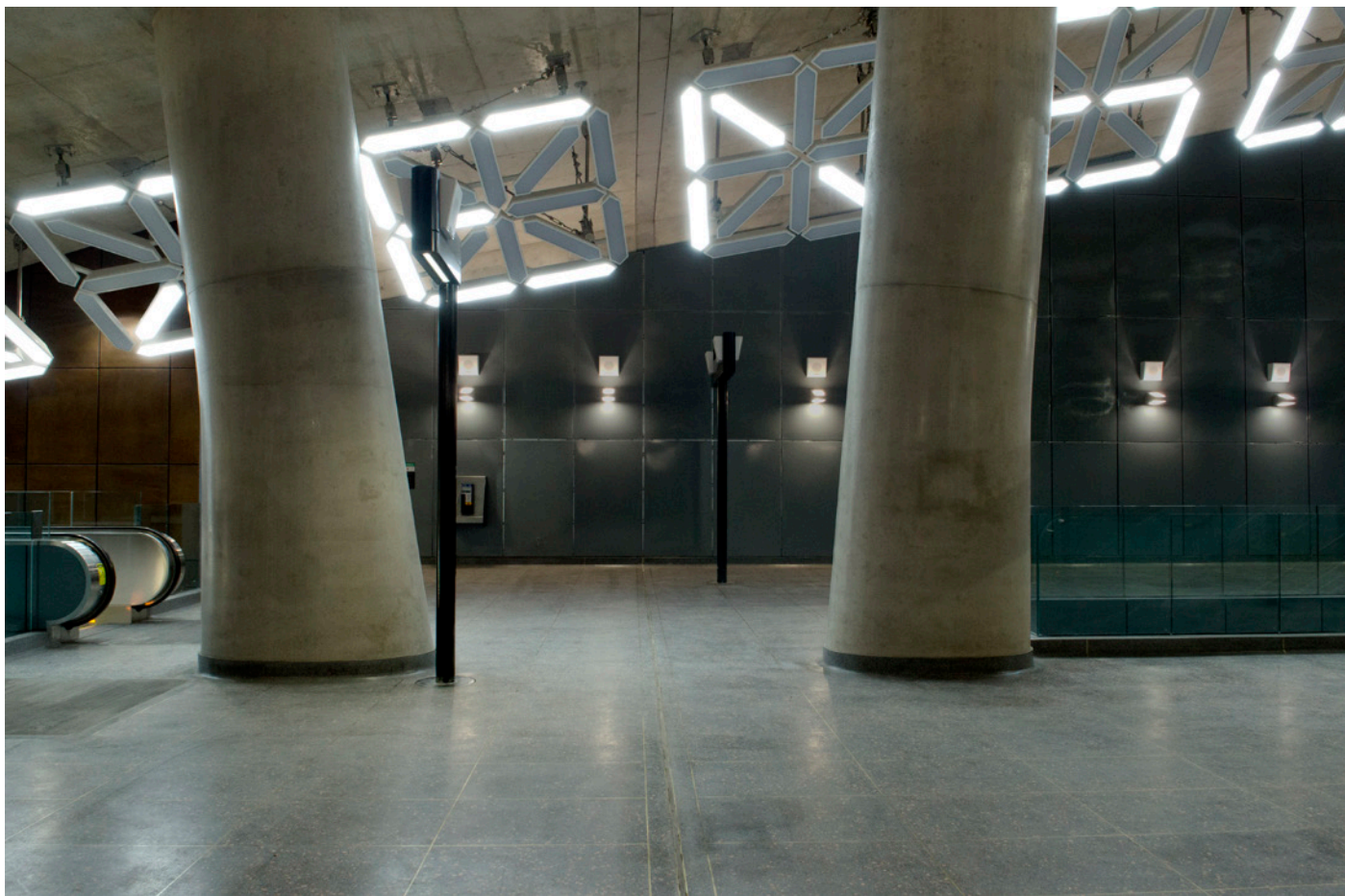
LightSpell, 2017

Interactive public art installation and illumination system for Steeles West subway station in Toronto, Canada (Spadina Line Extension Project)

Dimensions: 125m length x 3m width

Commission by Toronto Transit Cooperation (TTC)

Photo ©2017 realities:united



realities:united

LightSpell, 2017

Interactive public art installation and illumination system for Steeles West subway station in Toronto, Canada (Spadina Line Extension Project)

Dimensions: 125m length x 3m width

Commission by Toronto Transit Cooperation (TTC)

Photo ©2017 realities:united



realities:united

BIG Vortex (What does a ton of CO₂ look like?), 2016 (winning competition entry)

Smoke Ring Generator Installation for Amagerforbrænding waste-to-energy plant, Copenhagen, Denmark

Smoke Rings: Ø 30m, 3m height

Rendering ©2010 BIG | Project in collaboration with BIG Architects

Video: <https://vimeo.com/40229132>



realities:united

BIG Vortex (What does a ton of CO₂ look like?), 2016 (winning competition entry)

Smoke Ring Generator Installation for Amagerforbrænding waste-to-energy plant, Copenhagen, Denmark

Smoke Rings: Ø 30m, 3m height

Rendering ©2010 BIG | Project in collaboration with BIG Architects

Video: <https://vimeo.com/40229132>



realities:united

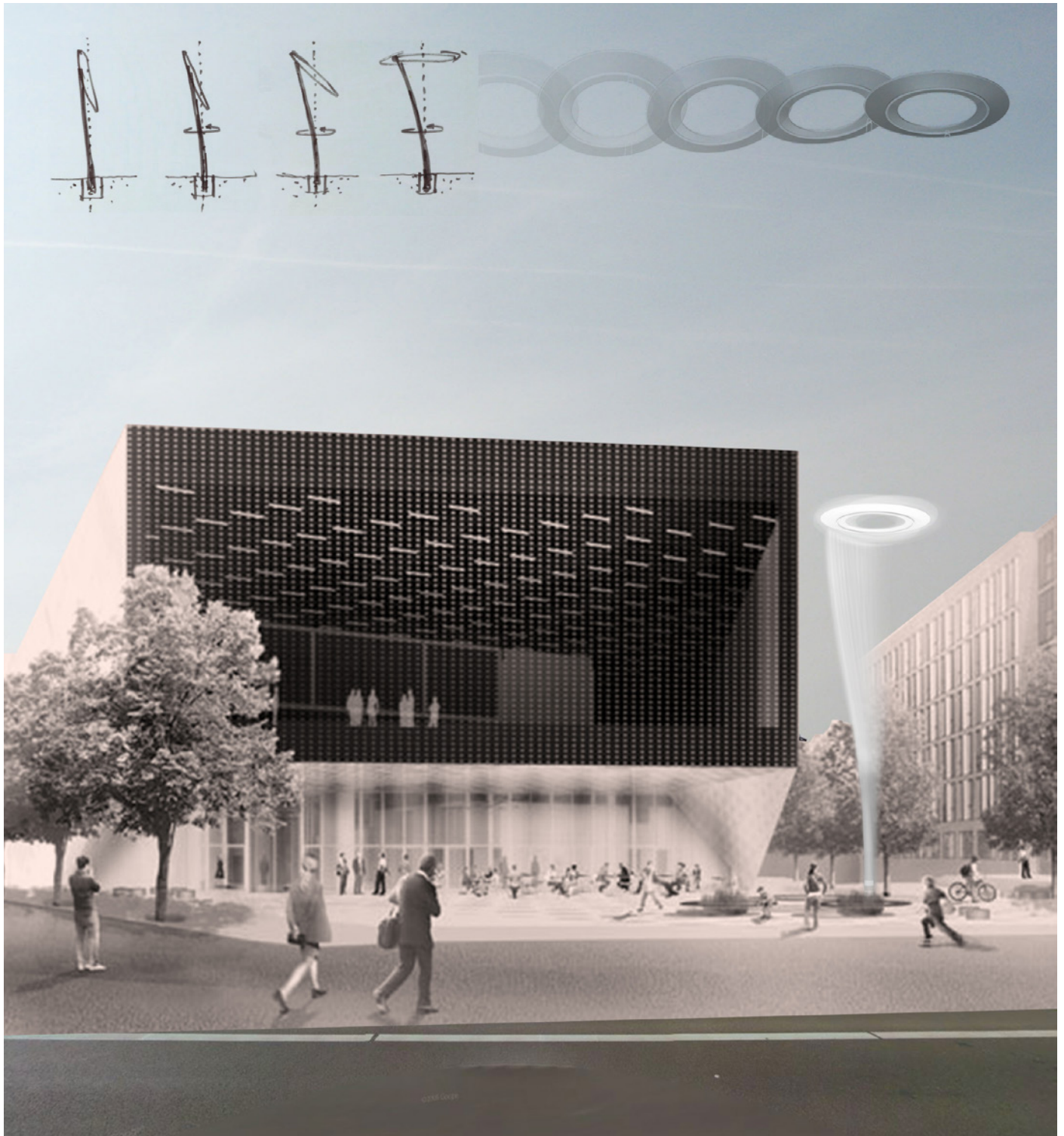
BIG Vortex (What does a ton of CO₂ look like?), 2016 (winning competition entry)

Smoke Ring Generator Installation for Amagerforbrænding Waste-to-Energy Plant, Copenhagen, Denmark

Smoke Rings: Ø 30m, 3m height

Renderings ©2011 realities:united | Project in collaboration with BIG Architects

Video: <https://vimeo.com/40229132>



realities:united

Drehmoment, 2018 (under construction)

Kinetic sculpture for the House of the Future, Berlin

Dimensions: approx. 15 m high, 4,30 m diameter

Image ©2016 realities:united



realities:united

Architecture of Autonomy, 2017

Gwangju City, South Korea

Permanent installation for the Gwangju Biennale

Dimensions: approx. 5m x 23m

Photo ©2017 Kerb



realities:united

Architecture of Autonomy, 2017

Gwangju City, South Korea

Permanent installation for the Gwangju Biennale

Dimensions: approx. 5m x 23m

Photo ©2017 Kerb



realities:united
 Architecture of Autonomy, 2017
 Gwangju City, South Korea
 Permanent installation for the Gwangju Biennale
 Dimensions: approx. 5m x 23m
 Photo ©2017 Kerb



realities:united

Architecture of Autonomy, 2017

Gwangju City, South Korea

Permanent installation for the Gwangju Biennale

Dimensions: approx. 5m x 23m

Photo ©2017 Kerb



realities:united

Flussbad, 2023

Concept to convert part of Berlin's Spree river into a natural swimming pool

Length of swimming pool: 745m; Length of natural filter system (wetlands): 390m; Length of renaturized river section: 640m

Image ©2012 realities:united



realities:united

Flussbad, 2023

Concept to convert part of Berlin's Spree river into a natural swimming pool

Length of swimming pool: 745m; Length of natural filter system (wetlands): 390m; Length of renaturized river section: 640m

Image ©2016 realities:united



realities:united

Flussbad, 2023

Concept to convert part of Berlin's Spree river into a natural swimming pool

Length of swimming pool: 745m; Length of natural filter system (wetlands): 390m; Length of renaturized river section: 640m

Image ©2016 realities:united



realities:united
Jan Edler & Tim Edler

Foto ©2008 Steffen Jänicke